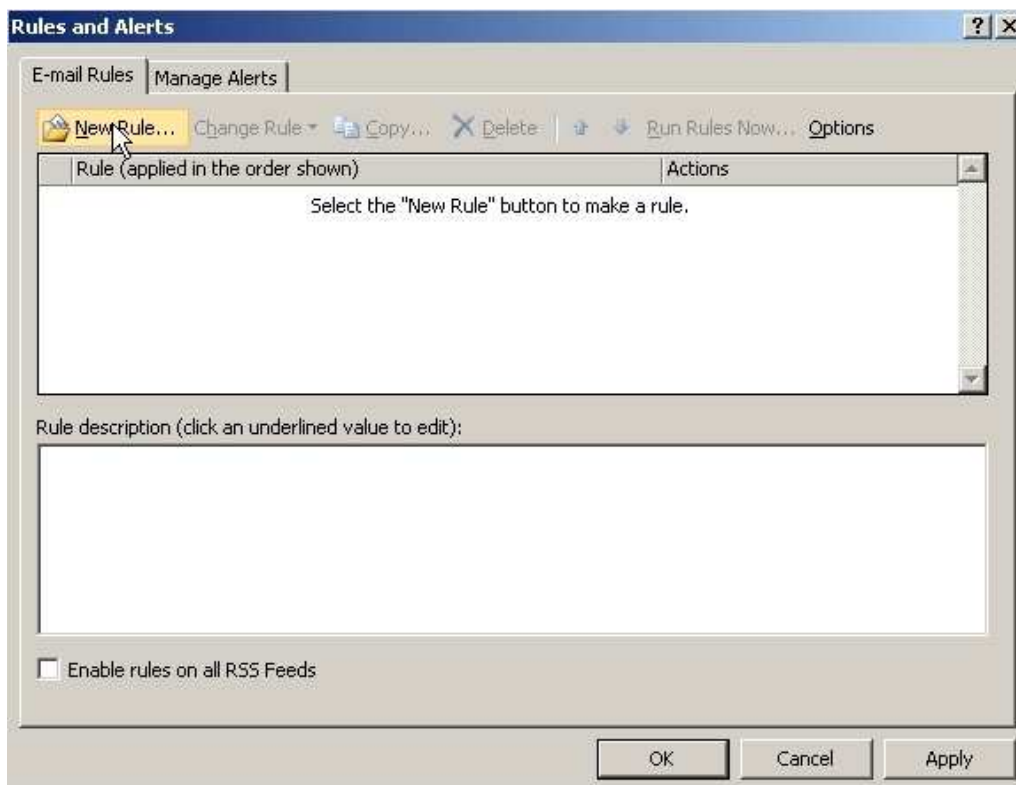
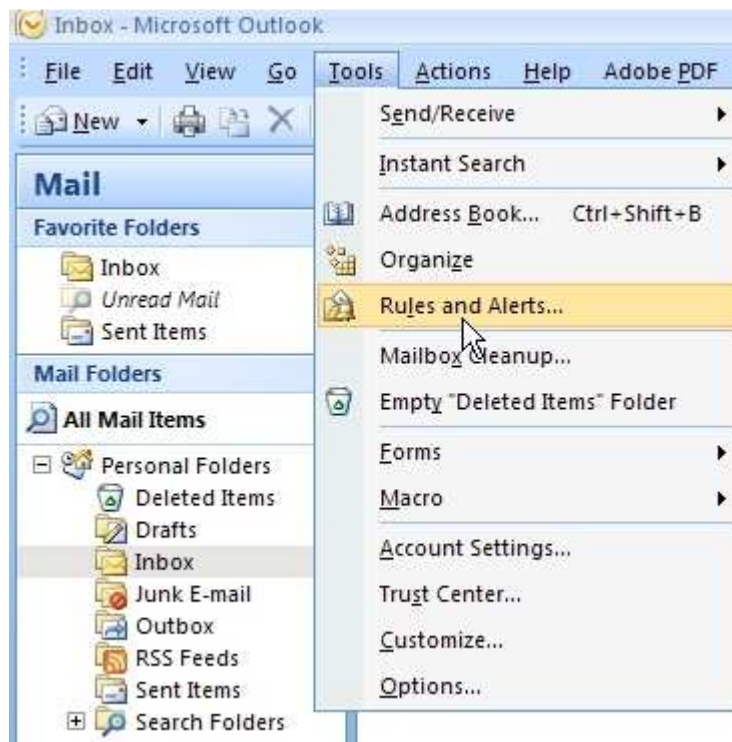
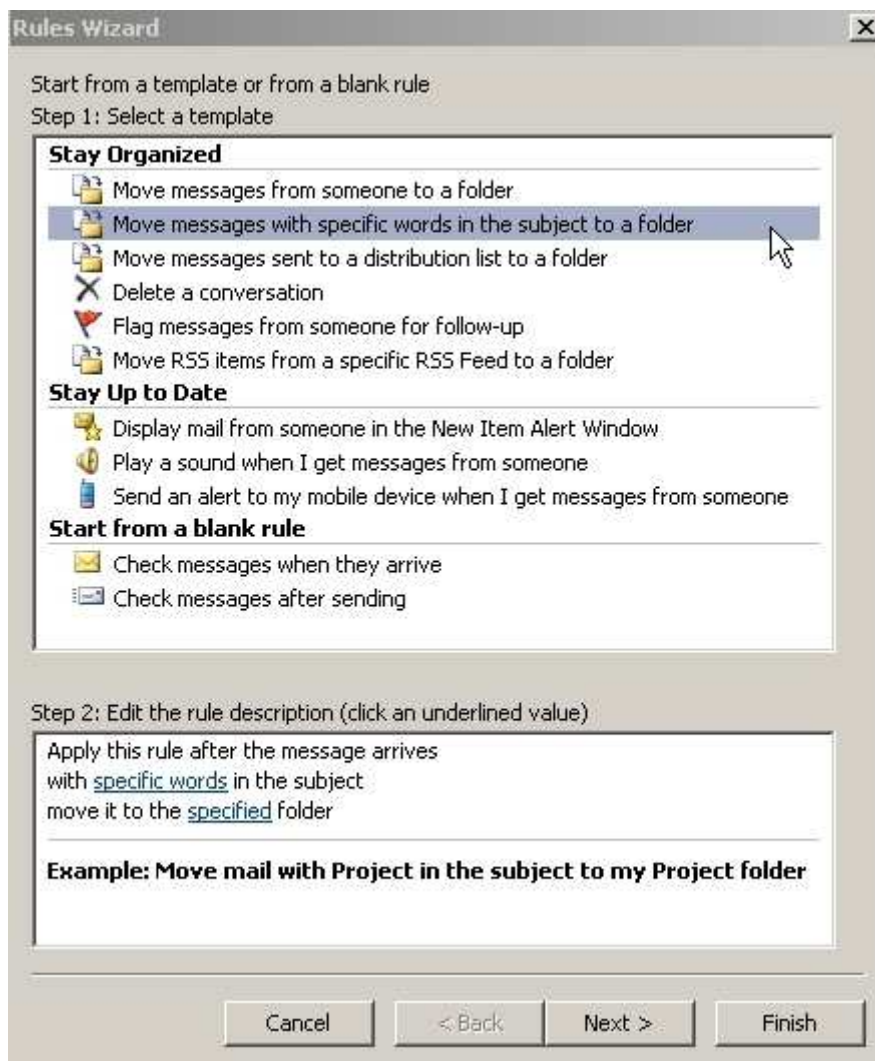


Create a rule in Outlook 2007 to move WML emails to their own folder

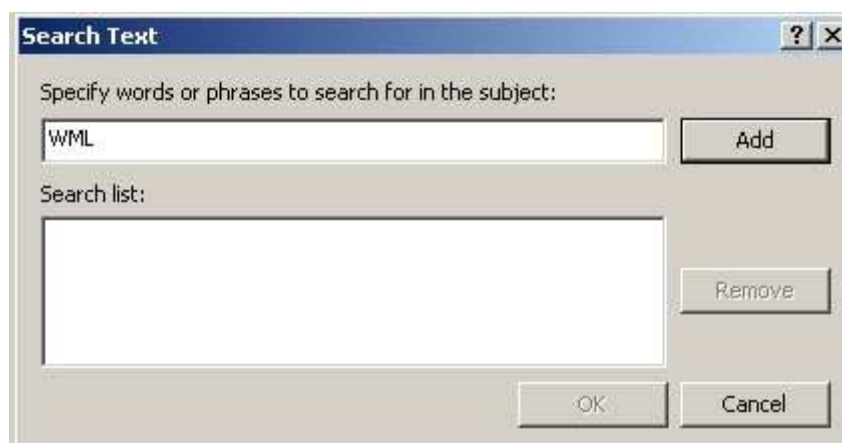
Open Outlook 2007 and go to the *Tools* menu followed by the *Rules and Alerts* sub menu



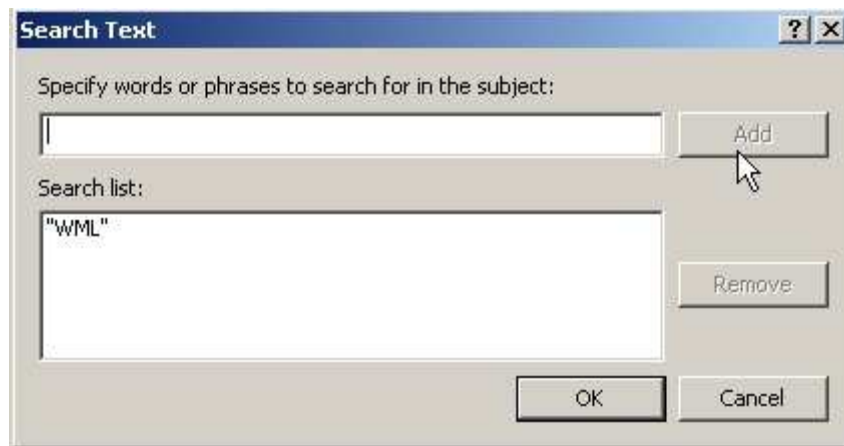
Click *New Rule ..*



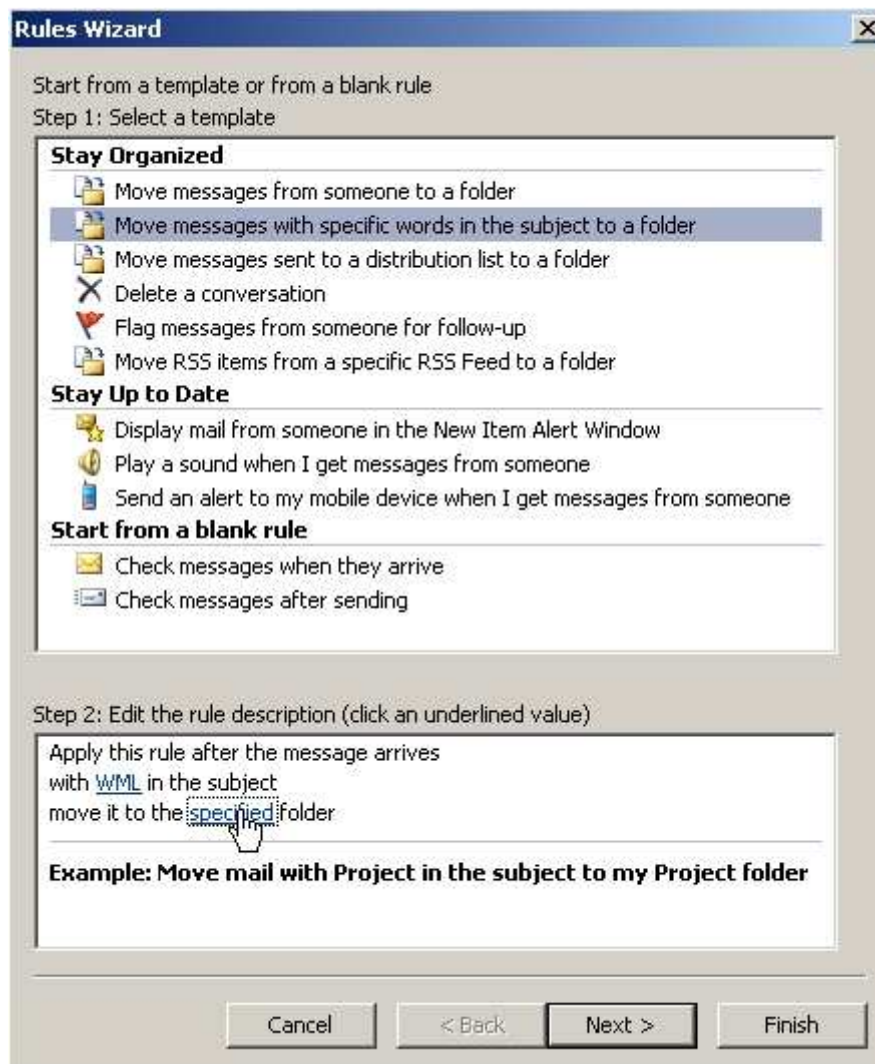
Click *Move Messages with specific words in the subject to a folder*



Type WML in the top box



Click *Add* and press *OK*



Click *specified folder*



Highlight Inbox and press *New...*



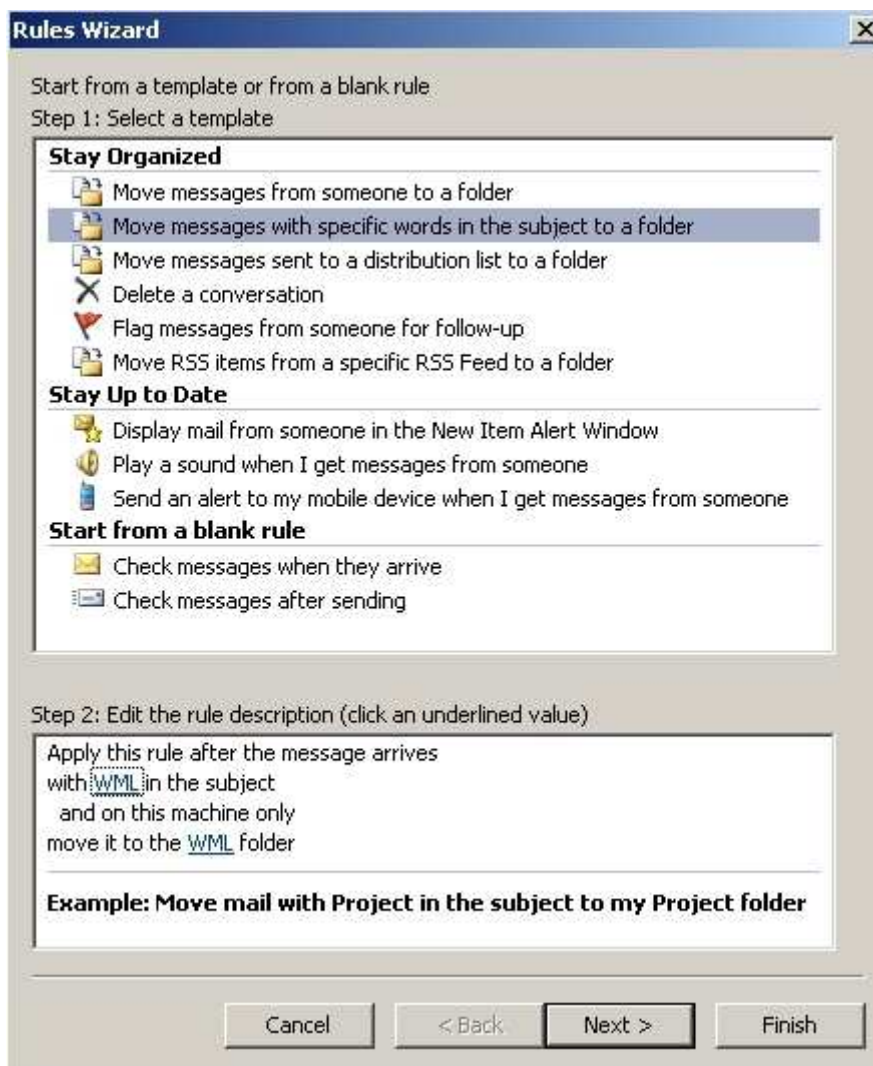
Type in WML in the Name box and press OK



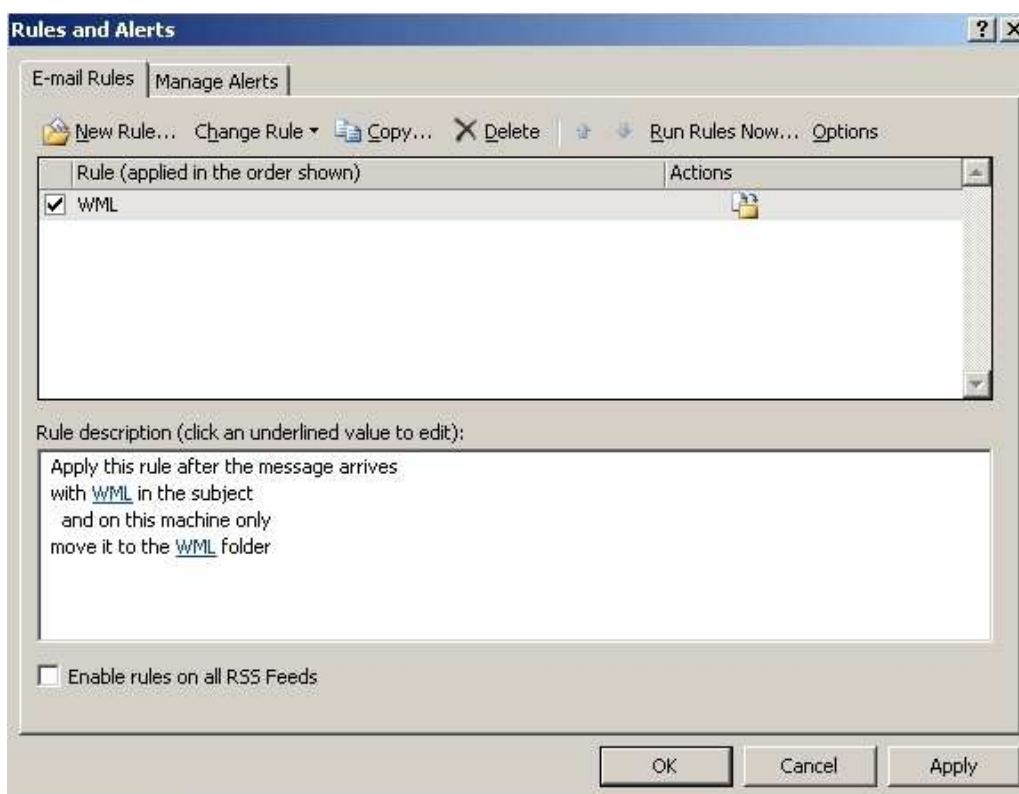
Press OK



Press *OK* again



Press *Finish*



Press *OK* and the rule is set.